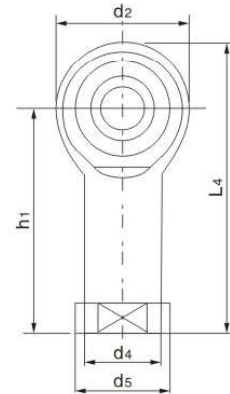
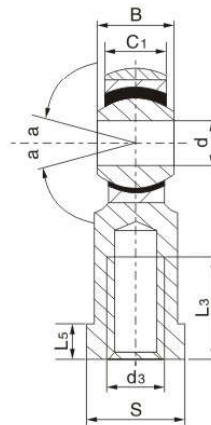




Self-lubricating rod end bearings female thread steel on ptee-metallic fabric maintenance free series

SI...T/K

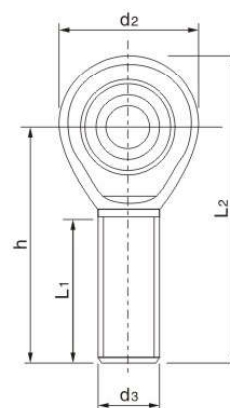
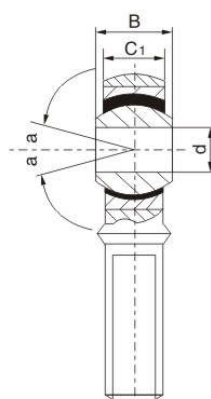


Bearings number	Dimensions (mm)												a°	Max stat load capacity	Weight (kg)
	d	D3	d2	d5	S	B	L5	C1	h1	L3	d4	L4			
SI5T/K	5	M5X0.8	18	12.5	10	8	4	6	27	10	9	36	13		
SI6T/K	6	M6X1	20	13	11	9	5	6.75	30	12	10	45	13	7.20	0.027
SI8T/K	8	M8X1.25	24	16	14	12	5	9	36	16	12.5	48	13	11.60	0.046
SI10T/K	10	M10X1.5	28	19	17	14	6.5	10.5	43	20	15	57	13	14.50	0.076
SI12T/K	12	M12X1.75	32	22	19	16	6.5	12	50	22	17.5	66	13	17.00	0.115
SI14T/K	14	M14X2	36	25	22	19	8	13.5	57	25	20	75	13	24.00	0.170
SI16T/K	16	M16X2	40	27	22	21	8	15	64	28	22	84	13	28.50	0.230
SI18T/K	18	M18X1.5	46	31	27	23	10	16.5	71	32	25	94	13	35.00	0.320
SI20T/K	20	M20X1.5	50	34	30	25	10	18	77	33	27.5	102	13	40.00	0.42
SI22T/K	22	M22X1.5	54	37	32	28	12	20	84	37	30	111	13	52.00	0.54
SI25T/K	25	M25X2	60	42	30	31	12	22	94	42	33.5	124	13	60.00	0.75
SI28T/K	28	M27X2	66	46	41	35	14	26	103	41	37	136	13		
SI30T/K	30	M30X2	70	50	41	37	15	25	110	51	40	145	13	81.00	1.30

★ For Left-hand thread suffix "L" is added to bearings number and thread SI18T/K M8X1.25L-6H

Self-lubricating rod end bearings male thread
steel on ptee-metallic fabric maintenance free series

SA...T/K



Bearings number	Dimensions (mm)								a°	Max stat load capacity	Weight (kg)
	d3	d	d2	B	C1	h	L1	L2			
SA5T/K	M5X0.8	5	18	8	6	33	19	42	13		
SA6T/K	M6X1	6	20	9	6.75	36	22	46	13	7.20	0.021
SA8T/K	M8X1.25	8	24	12	9	42	25	54	13	11.60	0.034
SA10T/K	M10X1.5	10	28	14	10.5	48	29	62	13	14.50	0.058
SA12T/K	M12X1.75	12	32	16	12	54	33	70	13	17.00	0.092
SA14T/K	M14X2	14	36	19	13.5	60	36	77	13	24.00	0.153
SA16T/K	M16X2	16	40	21	15	66	40	86	13	28.50	0.205
SA18T/K	M18X1.5	18	46	23	16.5	72	44	95	13	35.00	0.280
SA20T/K	M20X1.5	20	50	25	18	78	47	103	13	40.00	0.370
SA22T/K	M22X1.5	22	54	28	20	84	51	111	13	52.00	0.475
SA25T/K	M25X2	25	60	31	22	94	57	124	13	60.00	0.650
SA28T/K	M27X2	28	66	35	26	103	62	136	13		
SA30T/K	M30X2	30	70	37	25	110	66	145	13	81.00	1.070

★ For Left-hand thread suffix "L" is added to bearings number and thread SAL8T/K M8X1.25L-6H